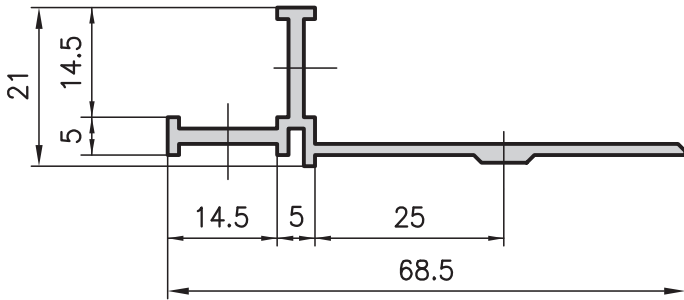
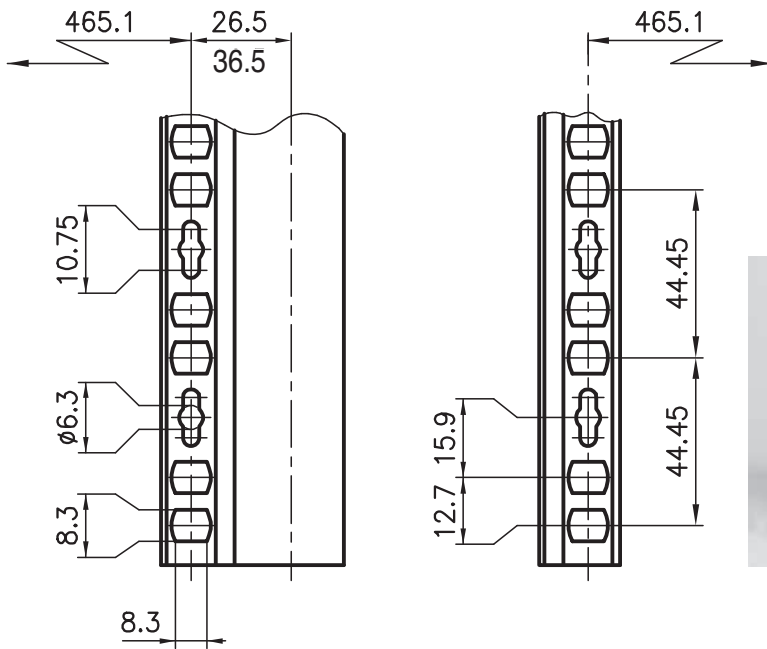
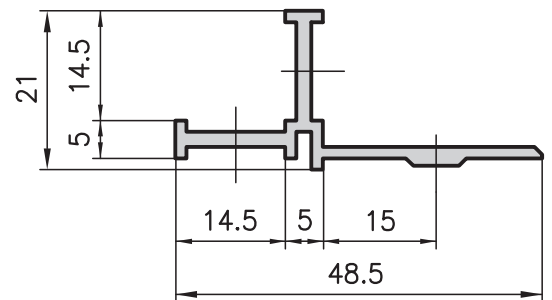


19" auxiliary extrusion type A05-2



19" auxiliary extrusion type B05-2



Application

The screw-on extrusion allows 19" racking to be incorporated into electronic, pneumatic and hydraulic applications. This specially punched rail can be bolted onto any standard design extrusion with a base of 50 or 30 mm. It meets the requirements of IEC297. Equipment is easy to install using M6 nuts and retaining clips.



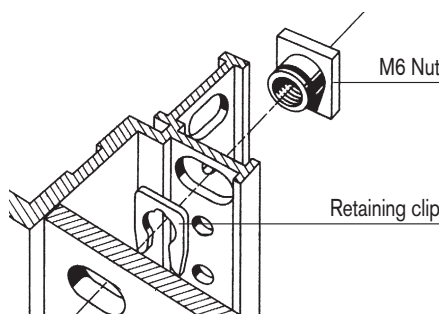
Technical data

Cross-section area	=	1.67 cm ²
Weight	=	0.5 kg/m

Order data

Order number

19" auxiliary extrusion	
Standard length 5000 mm	A05-2-00/5000
19" auxiliary extrusion	
Cut to length	A05-2-02-02/...



Order data

Order number

Retaining clip	H2-506
Special M6 nut	H2-504

Technical data

Cross-section area	=	1.37 cm ²
Weight	=	0.4 kg/m

Order data

Order number

19" auxiliary extrusion	
Standard length 5000 mm	B05-2-00/5000
19" auxiliary extrusion	
Cut to length	B05-2-02-02/...