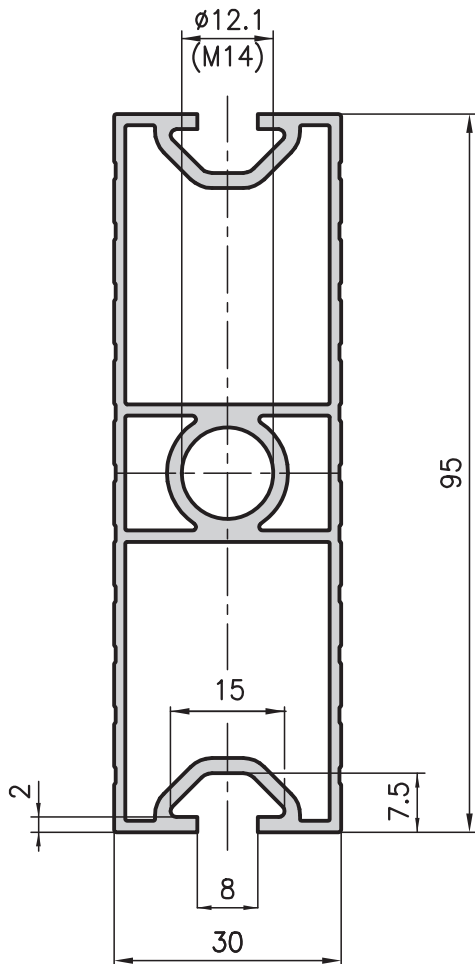


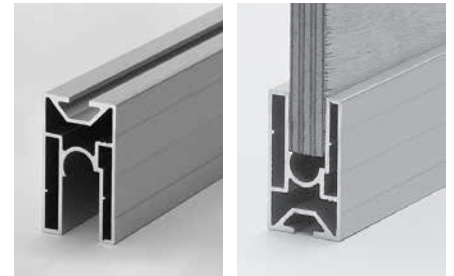
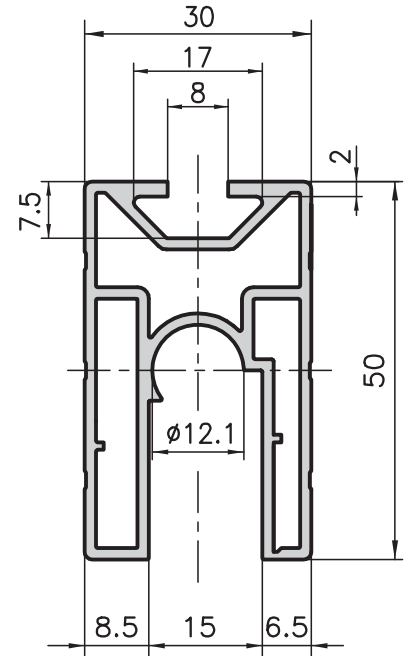
30x95 box frame extrusion type B01-7



Application

The basic material for the single and double wheeled runner (see page 172). However, it can also be used as a frame extrusion to hold thick panels in place.

30x50 runner extrusion type B10-9



Technical data

I_x	=	55.99 cm ⁴
I_y	=	7.94 cm ⁴
W_x	=	11.79 cm ³
W_y	=	5.29 cm ³
Cross-section area	=	6.54 cm ²
Weight	=	1.8 kg/m

Order data Order number

30x95 box frame extrusion	
Standard length 5850 mm	B01-7-00/5000
30x95 box frame extrusion	
Cut to length	B01-7-02-02/...
Extra machining	Pages 57-61



Technical data

I_x	=	9.17 cm ⁴
I_y	=	4.51 cm ⁴
W_x	=	3.37 cm ³
W_y	=	2.98 cm ³
Cross-section area	=	3.94 cm ²
Weight	=	1.1 kg/m

Order data Order number

30x50 runner extrusion	
Standard length 5000 mm	B10-9-00/5000
30x50 runner extrusion	
Cut to length	B10-9-02-02/...
Extra machining	Pages 57-61