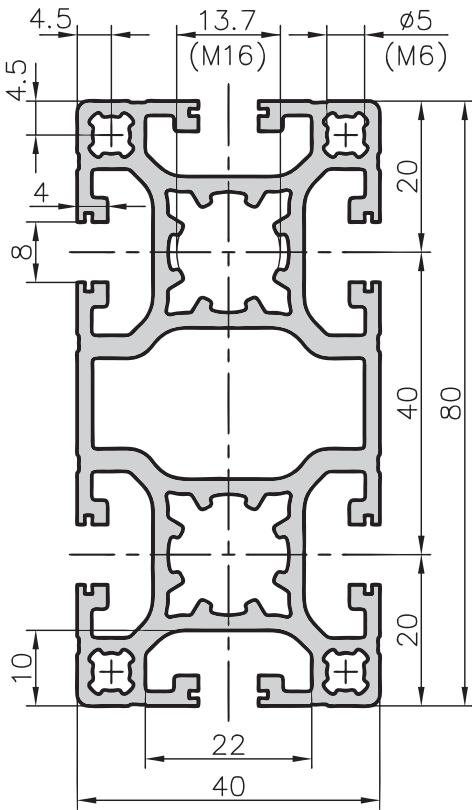
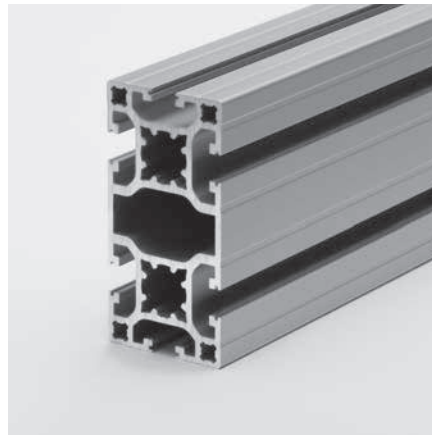


40x80 light extrusion type C02-3

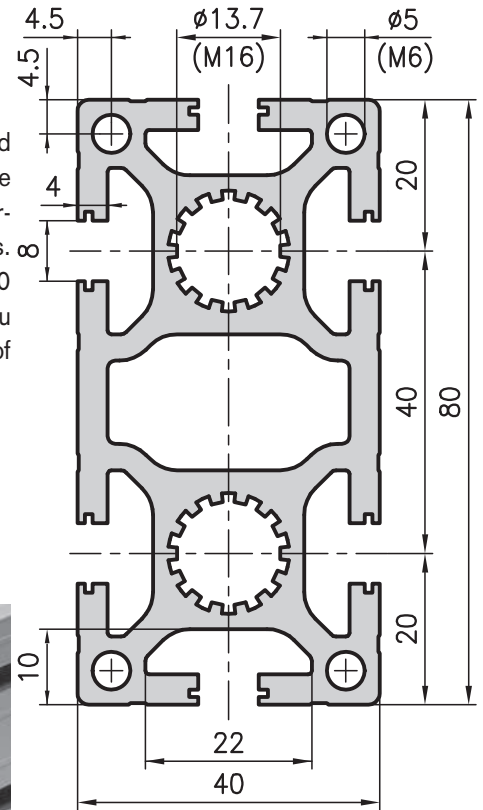


Application

These extrusions can be used to hold liquids and gases, to bear loads, to take threads and lots more. They can be a perfect solution to very specific problems. They can be combined with 20, 30 and 50 series extrusions, which means that you can genuinely build on this design of extrusion.



40x80 base extrusion type C01-3

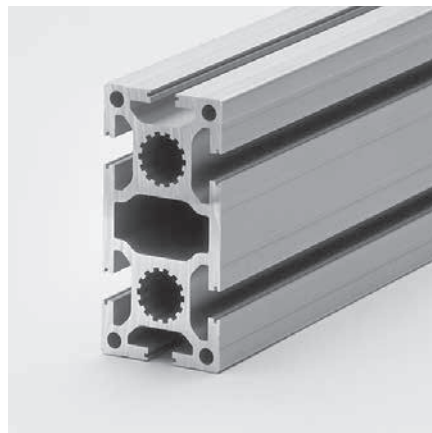


Technical data

I _x	=	64.90 cm ⁴
I _y	=	17.70 cm ⁴
W _x	=	16.23 cm ³
W _y	=	8.85 cm ³
Cross-section area	=	10.20 cm ²
Weight	=	2.8 kg/m

Order data Order number

40x80 light extrusion	
Standard length 5000 mm	C02-3-00/5000
40x80 light extrusion	
Cut to length	C02-3-02-02/...
Extra machining	Pages 57-61



Technical data

I _x	=	81.95 cm ⁴
I _y	=	22.74 cm ⁴
W _x	=	20.49 cm ³
W _y	=	11.37 cm ³
Cross-section area	=	13.50 cm ²
Weight	=	3.7 kg/m

Order data Order number

40x80 base extrusion	
Standard length 5000 mm	C01-3-00/5000
40x80 base extrusion	
Cut to length	C01-3-02-02/...
Extra machining	Pages 57-61