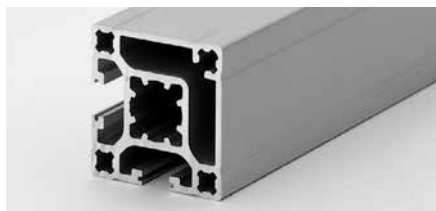
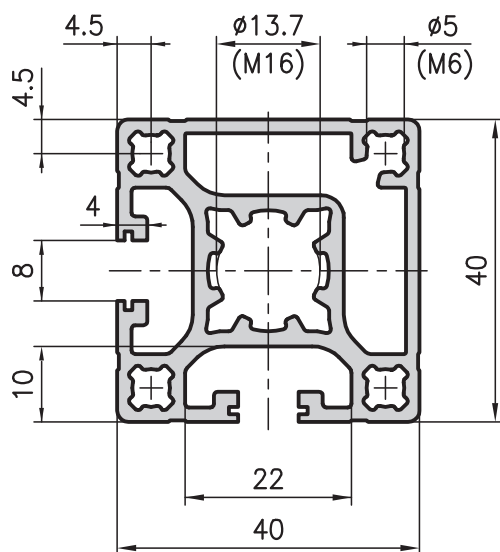


## 40x40 corner extrusion type C01-7



### Application

Partially closed extrusions are particularly attractive in design, trap less dirt and can be used for a wide range of applications.

#### Technical data

$I_{x,y}$	=	9.21 cm <sup>4</sup>
$W_{x,y}$	=	4.53 cm <sup>3</sup>
Cross-section area	=	5.56 cm <sup>2</sup>
Weight	=	1.5 kg/m

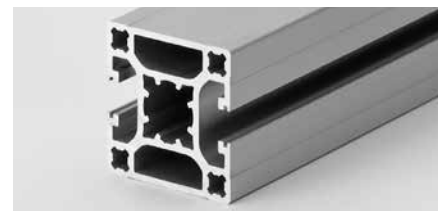
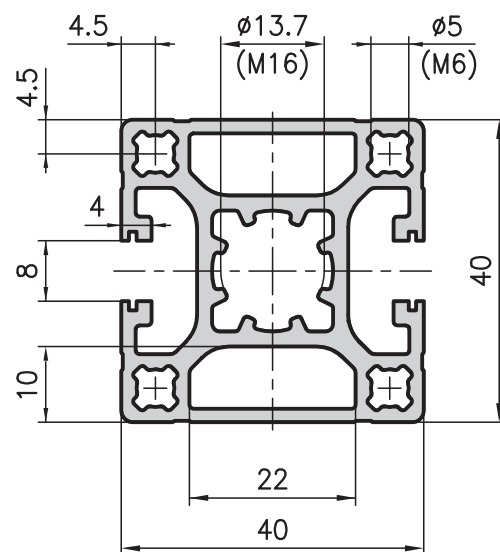
#### Order data

#### Order number

40x40 corner extrusion	
Standard length 5000 mm	C01-7-00/5000
40x40 corner extrusion	
Cut to length	C01-7-02-02/...
Extra machining	Pages 57-61



## 40x40 double face extrusion type C02-4



### Application

For all types of enclosure, as well as for structures with extrusion faces which are mainly closed and for applications with an attractive design.

#### Technical data

$I_x$	=	9.56 cm <sup>4</sup>
$I_y$	=	9.21 cm <sup>4</sup>
$W_x$	=	4.78 cm <sup>3</sup>
$W_y$	=	4.60 cm <sup>3</sup>
Cross-section area	=	5.69 cm <sup>2</sup>
Weight	=	1.5 kg/m

#### Order data

#### Order number

40x40 double face extrusion	
Standard length 5000 mm	C02-4-00/5000
40x40 double face extrusion	
Cut to length	C02-4-02-02/...
Extra machining	Pages 57-61